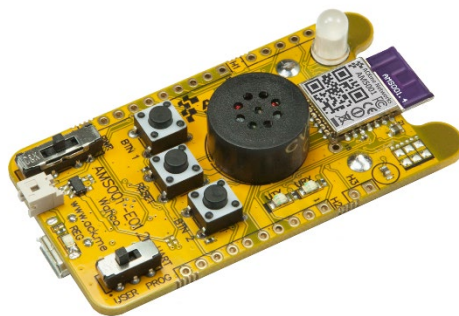




AMS00x-E01 Evaluation Guide



AMS001-E01
'Wahoo'

Disclaimer

While the information provided in this document is believed to be accurate, it is under development and Zentri reserves the right to make changes without further notice to the product described herein to improve reliability, function, or design, and makes no guarantee or warranty concerning the accuracy of said information, nor shall it be responsible for any loss or damage of whatever nature resulting from the use of, or reliance upon, such information. Zentri makes no warranties of any kind, whether express, implied or arising by custom or course of trade or performance, and specifically disclaims the implied warranties of title, non-infringement, merchantability, or fitness for a particular purpose.

No part of this document may be copied, reproduced, stored in a retrieval system, or transmitted, in any form or by any means, electronic, mechanical, photographic, or otherwise, or used as the basis for manufacture or sale of any items without the prior written consent of Zentri.

Trademarks

Zentri and the Zentri logo are trademarks of Zentri. Other trademarks in this document belong to their respective owners.

©2014-2018 Zentri <http://www.silabs.com>

All rights reserved.

Document Number: ARG-AMS00x-E01

Release Date: October 3, 2018

Contact

<https://www.silabs.com/about-us/contact-us>

About this User Guide

This guide provides information and basic usage instructions for the ZentriOS-S serial Bluetooth Low Energy application and the family of AMS001/AMS002 ‘Bobcat’ modules available from Zentri.

Evaluation boards covered by this guide include:

- AMS00x-E01 ‘Wahoo’

In this document AMS00x refers to both the AMS001 and AMS002 modules.

Further information about ZentriOS-S is available online at:

<https://docs.zentri.com/zentrios/s/latest/>

Organization

This document is organized into the following sections:

1	Introduction.....	1
2	Feature Identification.....	2
3	Using ZentriOS-S with Bobcat & Wahoo	5
4	Using the Zentri BLE Manager	11
5	Ordering Information	21
6	Revision History & Glossary.....	22

Contents

1	Introduction	1
2	Feature Identification	2
2.1	AMS001-E01 'Wahoo'	2
2.2	Power Supply Options	3
2.3	UART Selection	4
3	Using ZentriOS-S with Bobcat & Wahoo.....	5
3.1	Getting Help.....	5
3.2	Listing ZentriOS-S Variables.....	6
3.3	Scanning for Bluetooth Peripherals.....	6
3.4	Connecting to a Peripheral.....	7
3.5	Advertising as a Peripheral.....	7
3.6	Using GPIOs	7
3.7	Save and Reboot.....	8
3.8	Save Factory Settings.....	8
3.9	Factory Reset	8
3.10	Command vs. Stream Mode	9
3.10.1	Command Mode	9
3.10.2	Stream Mode	10
3.11	Want more?.....	10
4	Using the Zentri BLE Manager	11
4.1	Scanning and Selecting your Device	12
4.2	Updating from TruConnect.....	13
4.3	Claiming Your Device	14
4.4	Device Details	15
4.5	Updating and BLE Reset.....	17
4.6	About the Zentri BLE Manager	18
4.7	View Profile and Log Out	19
4.8	Unclaiming a Device	20
5	Ordering Information.....	21
6	Revision History & Glossary	22
6.1	Revision History	22
6.2	Glossary	22

APPENDIX A – Configuring a Terminal Application

APPENDIX B – Evaluation Board Schematics

1 Introduction

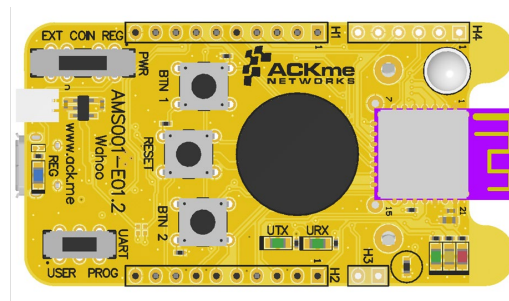
The 'Bobcat' family of Bluetooth Low Energy modules are fully certified small form factor, low power modules perfectly suited to deeply embedded wireless applications requiring low-power and low-cost in medium to high volume.

Each module runs a fully-licensed version of ZentriOS-S, Zentri's easy-to-use and reliable serial Bluetooth Low Energy application that provides a point-point wireless connection, rich peripheral interface and various BLE profiles for wireless sensors and related products requiring Bluetooth Low Energy.

Evaluation of ZentriOS-S and the Bobcat family of modules is available with the AMS00x-E01 'Wahoo' evaluation board. In this document AMS00x refers to both the AMS001 and AMS002 modules.

The evaluation board is shown in Figure 1 and its features are listed in Table 1.

Figure 1. AMS001-E01 Wahoo



AMS001-E01 'Wahoo'

Table 1. AMS00x-E01 Evaluation Board Features

Feature	AMS00x-E01 'Wahoo'
Product Number	AMS00x-E01
Module style	Surface mount
Serial Interface	USB-UART
Power supply options	USB +5V Li-Po battery (with onboard recharger) CR2032 coin cell
User LEDs	Tri-colour LED / 3 individual LEDs
User Buttons	2
Reset Button	Yes
Sensors	Speaker, Thermistor, Accelerometer
Expansion Headers	3.3V UART, 2 x 10-pin

2 Feature Identification

2.1 AMS001-E01 'Wahoo'

The Wahoo evaluation board comes complete with a surface mount AMS001 (or AMS002) 'Bobcat' module. Each pin on the Bobcat module is connected to the expansion header. Schematics for the board are provided in Appendix B.

Figure 2. AMS00x-E01 Features (TOP)

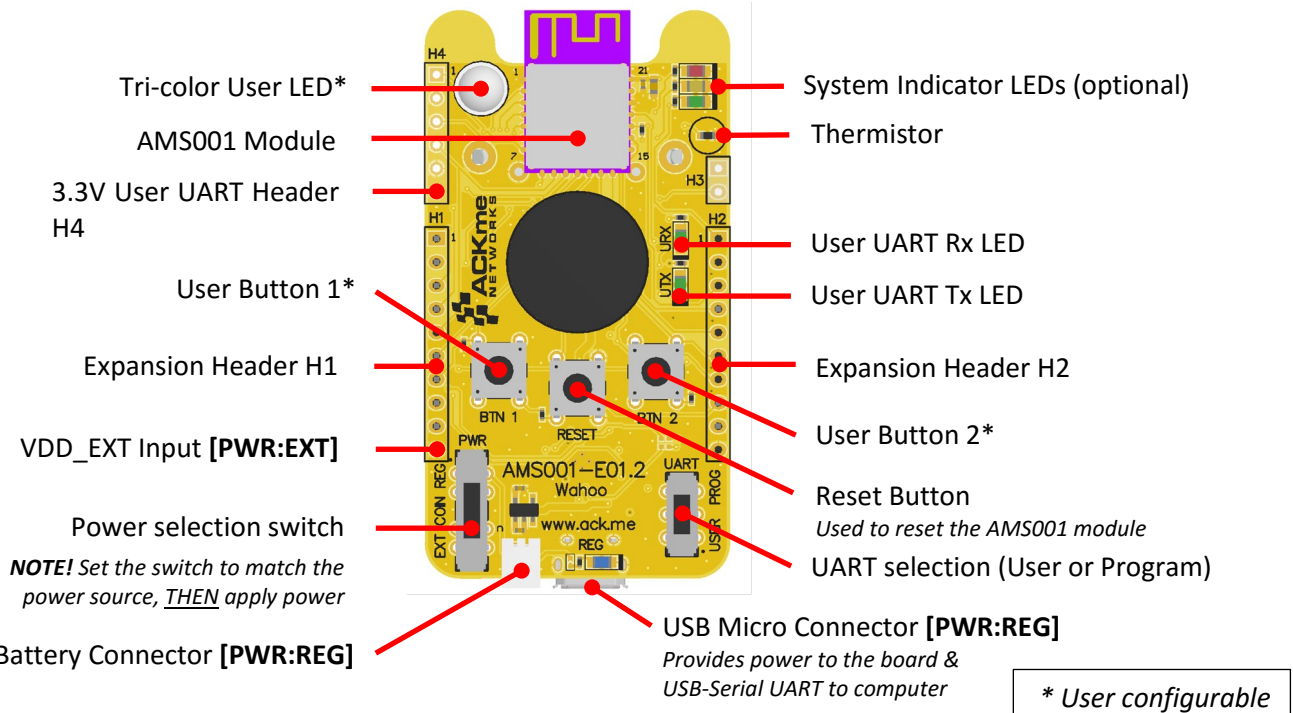


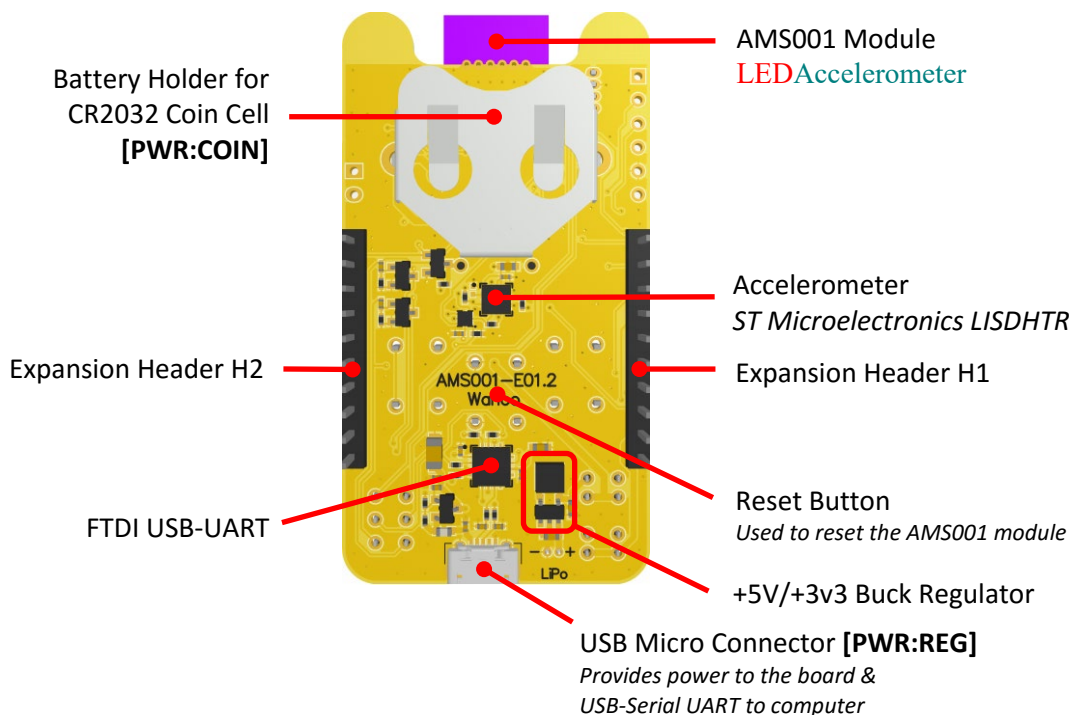
Table 2. AMS00x-E01 Expansion Header Connections

AMS001	H1
GPIO 0	1
GPIO 1	2
GPIO 2	3
GPIO 3	4
GPIO 4	5
GPIO 5	6
GPIO 6	7
GPIO 7	8
VDD_EXT	9
GND	10

AMS001	H2
GPIO 14	1
GPIO 13	2
GPIO 12	3
GPIO 11	4
GPIO 10	5
GPIO 9	6
GPIO 8	7
RESET_N	8
VDD	9
GND	10

AMS001	H4
USER_TX	1
USER_RX	2
USER_RTS	3
USER_CTS	4
GND	5
VDD	6

Figure 3. AMS00x-E01 Features (BOTTOM)



2.2 Power Supply Options

The board may be powered by various power sources listed in Table 1.

Table 3. Wahoo Power Supply Sources

Power Supply Source	PWR Switch Position	Notes - Select the PWR switch to match your supply before applying power!
USB	REG	+5V is supplied from the USB interface
Li-Po Battery	REG	Single cell Li-Po battery with nominal voltage of +4.2V plugged into the white Li-Po battery connector
Coin Cell	COIN	3.0V CR2032-style lithium coin cell inserted into the battery holder on the underneath of the board
External 3.3V	EXT	External +3.3V supply connected to H1 Pin 9



Note! Before changing the power source, select the correct **PWR** switch position. Failure to select the switch position prior to applying power may cause the onboard power supply to shut down.

2.3 UART Selection

The Bobcat module has two UARTs, a User UART for normal operation and a Programming UART. The Programming UART is only used if the module requires a custom program or manual firmware upgrade. For most use cases, the UART switch should be configured to the position marked USER.

3 Using ZentriOS-S with Bobcat & Wahoo

The Bobcat module on the Wahoo evaluation board runs a licensed version of ZentriOS-S, the flexible, easy-to-use and intuitive Bluetooth Low Energy application from Zentri.

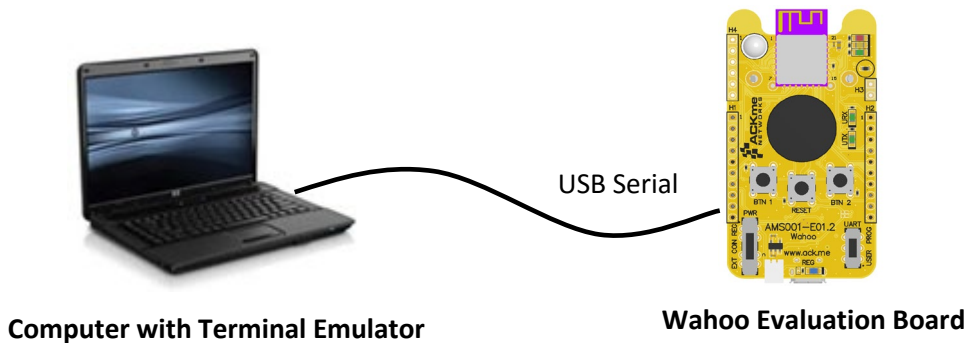
ZentriOS-S is the basis of multiple software products. For the full list, see:

<https://docs.zentri.com/zentrios/s/latest/products>

The ZENTRI-TRUCONNECT product is fully compatible with the legacy TruConnect 2.x product. Other ZentriOS-S products provide a subset of the full range of ZentriOS-S features. This allows a memory-constrained BLE device to run only the features you need to build your ZentriOS-S app. Some of the commands described below are not supported by all products.

To get started with ZentriOS-S, place the AMS001-E01 **PWR** switch into the **REG** position, THEN plug the evaluation board into the USB port of the computer and open a terminal emulator as described in Appendix A. The USB cable provides the Bobcat module and evaluation board with power and a serial UART connection to the computer. Note that the **PWR** switch must be in the correct position BEFORE applying power to the board.

With the board connected to the computer, verify the tri-colour LED is slow-blinking green. If the LED does not blink, check the UART switch is set to USER, then try re-plugging the USB cable, or try a different USB cable.



Note! The blue power LED (marked **REG**) will not illuminate when power is supplied until the link L1 is soldered into place. The link is not populated at the factory to avoid unwanted power drain during battery operation.

3.1 Getting Help

ZentriOS-S help is available online at <https://docs.zentri.com/zentrios/s/latest>.

ZentriOS-S operates in one of two serial bus modes: COMMAND mode, in which commands can be issued via a remote or UART serial interface, and STREAM mode, in which ZentriOS-S does not respond to commands and instead passes characters to the Bluetooth wireless connection.

On boot up, ZentriOS-S returns to stream mode. To instead boot into command mode by default, use the following ZentriOS-S commands to setup the serial bus initialization mode:

```
> set bu i command
> save
```

For more details on stream mode and command mode, see Section 3.10 Command vs. Stream Mode.

3.2 Listing ZentriOS-S Variables

A list of all ZentriOS-S variables is available by issuing the command: `get al`

```
> get al
bl a:      4C55CC10066F
bl c c:    0
bl s u:    175f8f23-a570-49bd-9627-815a6a27de2a
bl t a:    0
bl t c:    4
bl v m:    low
bl v h d:  30
bl v h i:  32
bl v l d:  300
bl v l i:  1024
bu i:      stream
bu s c:    edge
ce c c:    0
ce c m:    none
ce s m:    off
sy b n:    AMS001-E01.2
sy c e:    1
sy c h:    0
sy c p:    1
sy d n:    AMS-9A42
sy o e:    1
sy p:      4
sy r e:    1
ua b:      115200
ua f:      0
```

3.3 Scanning for Bluetooth Peripherals

To actively scan for any BLE peripheral in range using a high rate scan, use the `scan all high` command. Each device within range is listed on a separate line.

Note that the scan command is supported only by the following ZentriOS-S products:

- DUAL
- TRUCONNECT

Enter the following command:

```
> scan all high
Success
! # RSSI BD_ADDR          Device Name
# 1 -59 4C:55:CC:12:9a:42 AMS-9A42
# 2 -78 B8:E8:56:49:9F:9A Apple TV
```

To scan only for Zentri BLE peripherals in range (with the Zentri service UUID configured by the variable `bl s u`), use the `scan high` command without the `all` argument. Each device within range is listed on a separate line.

```
> scan high
Success
! # RSSI BD_ADDR          Device Name
# 1 -59 20:73:7a:12:9a:42 AMS-9A42
```

Further information about the `scan` command is available online at:

<https://docs.zentri.com/zentrios/s/latest/cmd/commands#scan>

3.4 Connecting to a Peripheral

To connect as a central to an Zentri BLE peripheral discovered during scanning, use the `con` command, with the index number listed by the results of `scan` as an argument, e.g. :

```
> con 1
Success
```

Note that the `con` command is supported only by the following ZentriOS-S products:

- DUAL
- TRUCONNECT

To disconnect from the peripheral, use the `det` command.

3.5 Advertising as a Peripheral

To make your Zentri BLE peripheral visible to other Bluetooth devices, use the `advertise` command:

```
> adv high
```

3.6 Using GPIOs

In ZentriOS-S, pins on the Bobcat module may be configured to one of any number of functions including standard IO, status indicator, status GPIO, serial bus mode select, control GPIO and a number of others.

Before a pin can be used, it is first necessary to check whether the GPIO is already in use for another purpose.

Use the `get gp u` command to see a list of GPIO functions. For example:

```
> get gp u
! # Description
# 0 i2c_sda
# 1 i2c_scl
# 2 user_tx
# 3 none
# 4 none
# 5 user_rx
# 6 none,factory
# 7 reserved
# 8 none
# 9 mode_sel
# 10 status_led
# 11 none
# 12 none
# 13 speaker
# 14 stream_gpio
```

The example below demonstrates how to assign the mode select function to GPIO 9 on the Bobcat module, after first removing any previous function assigned to GPIO 9.

```
> gfu 9 none
Success
> gfu 9 mode_sel
Success
```

3.7 Save and Reboot

When the value of a ZentriOS-S variable is changed, the new value is only saved to RAM (not flash!). The value of unsaved variables is lost when the module is reset or rebooted. To save variables to non-volatile flash memory, use the `save` command. The following example demonstrates that failing to `save` the variable value prior to reboot results in the newly assigned value being lost:

```
get sy r e
1
> set sy r e 0
Success
> get sy r e
0
> reboot
> get sy r e
1
> set sy r e 0
Success
> save
Success
> reboot
get sy r e
0
```



Note! ZentriOS-S configures some services (such as GPIO initialization) only after reboot. It may be necessary to save and reboot the module before the new value of some variables takes effect.

3.8 Save Factory Settings

A custom factory configuration can be saved ONCE ONLY to non-volatile memory using the command:

```
save factory <BD_ADDR>
```

The `<BD_ADDR>` argument is required to ensure against accidental use of the command. To find the `<BD_ADDR>`, use the `get bl a` command.

3.9 Factory Reset

The Bobcat module may be factory reset using the `fac` (factory reset) command or by holding the factory reset pin high for more than 10 seconds through a hardware reset. After a successful factory reset, all variables are set to factory defaults and the module reboots. To avoid accidental factory reset, the device BLE address must be provided when calling the `fac` command.

```
> get bl a
4C55CC2008FC
> fac 4C55CC2008FC
ZENTRI-TRUCONNECT-2.1.1.1, 2016-12-07T12:00:00Z, ZentriOS-S-2.1.1.1, Module:AMS002.5,
Board:N/A
[COMMAND_MODE]
```

3.10 Command vs. Stream Mode

The ZentriOS-S serial interface may be used in either Command Mode or Stream Mode. A brief description of each of these modes is provided in the following text. For detailed information, please refer to the online documentation at <https://docs.zentri.com/zentrios/s/latest/serial-interface#serial-bus-modes>.

3.10.1 Command Mode

Command mode provides an asynchronous command interface that a host may use to send and receive configuration information. Command mode is typically used by a host to configure ZentriOS-S. All preceding examples demonstrate usage of ZentriOS-S in command mode.

There are two ways to interact with ZentriOS-S in command mode. When operating in human friendly command mode, ZentriOS-S provides verbose asynchronous responses that are easy for humans to read. In machine friendly command mode, verbose prints and the command prompt are disabled and a well-defined response header is returned after each command.

Configuring Command Mode

Command mode can be configured using the variable `sy c m`

Command	Description
<code>set sy c m human</code>	Enable human friendly command mode
<code>set sy c m machine</code>	Enable machine friendly command mode

Setting `sy c m` executes a macro that sets the value of the four variables used to switch between human and command mode. These variables, together with the human and machine mode setting, are listed in the following table.

Command	Human	/	Machine	Description
<code>set sy p</code>	all	/	0	Set debug & informational print level
<code>set sy c h</code>	0	/	1	Disable/enable a response header
<code>set sy c p</code>	1	/	0	Turn on/off the user prompt
<code>set sy c e</code>	1	/	0	Turn on/off character echo. In human mode, lets you see what you're typing

Enabling and Disabling Command Mode

A device can issue commands to ZentriOS-S locally via the UART serial interface, or remotely via a wireless connection. Only one device may have command mode access to ZentriOS-S at any time.

A remote wireless device cannot place ZentriOS-S in command mode when a local device is actively using the command interface. Similarly, a local device cannot use command mode if a remote device is actively using the command interface.

A local device or a remote device using ZentriOS-S in command mode must put ZentriOS-S into stream mode before another device is allowed can use command mode. Access to command mode from a remote device can be disabled with the `set sy r e 0` command (set remote enable off).

3.10.2 Stream Mode

Stream Mode provides a streaming interface that transparently connects the Bobcat UART serial interface with a remote device over a Bluetooth Low Energy wireless connection. Stream mode provides a simple 1-1 wireless connection between the physical serial interface and a remote BLE device.

A wireless serial port is a typical application that uses stream mode.

3.11 Want more?

See ZentriOS-S documentation online at <https://docs.zentri.com/zentrios/s/latest/>, for features, commands and variables, versions and release notes.

A number of simple and more sophisticated example applications are also provided to help you get the most out of ZentriOS-S and the Bobcat family of Bluetooth Low Energy modules.

4 Using the Zentri BLE Manager

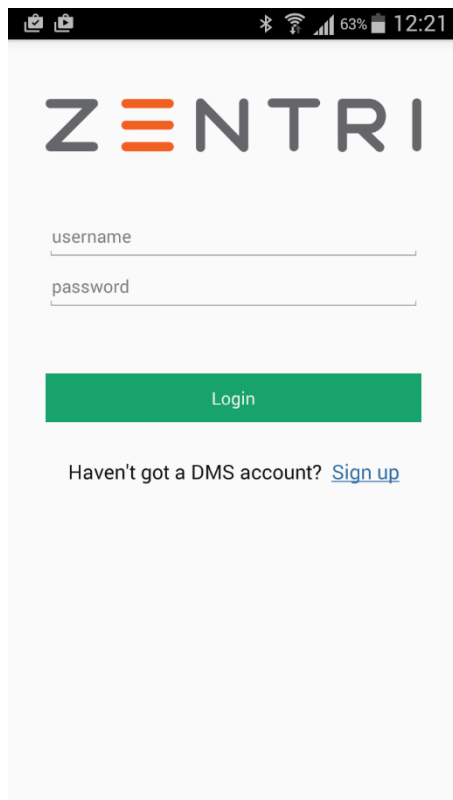
The Zentri BLE Manager runs on a mobile device, which provides a BLE to Wi-Fi bridge between your ZentriOS-S BLE device and the Zentri Device Management Server (DMS).

The Zentri BLE Manager is available for:

- Android devices from the [Google Play Store](#)
- iOS devices, from the [iTunes store](#)

You can use the Zentri BLE Manager for claiming your device for your DMS user account, and OTA (Over the Air) updating your device with different ZentriOS-S products.

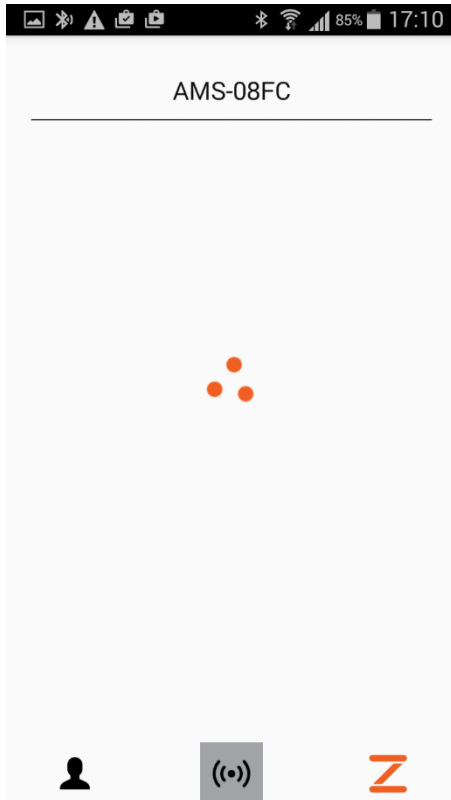
If you already have a DMS account, login with your username and password. If not, sign up for a free DMS account. You can do this by going to the DMS sign up page at <https://dms.zentri.com/signup>, or via the link on the Zentri BLE Manager app.



The app then displays the [Scan](#) page.


4.1 Scanning and Selecting your Device

The app scans for nearby Zentri BLE devices and displays the IDs on the Scan page. In the screen below only a single device has been found:




Select the device to manage it. If you have a ZentriOS-S product, the app displays the Device Details page. If you have an earlier TruConnect version, the app detects this and displays the Transition to ZentriOS-S page. See below.

The buttons on the bottom of the screen are, from left to right:

 DMS profile button

 Re-Scan button

 About button. See About the Zentri BLE Manager, below.

4.2 Updating from TruConnect

If after selecting your device, the Zentri BLE Manager app detects a TruConnect version earlier than ZentriOS-S 3.0, it prompts to update to the latest ZentriOS-S version. .



Confirm update

Your device is running old firmware
and must be updated to use the
Zentri DMS.

Do you wish to proceed?

Cancel

Update

During the update, a BLE Reset is required.

In the course of updating to ZentriOS-S from TruConnect, the app claims your device automatically. For more details of claiming, see Claiming Your Device below.

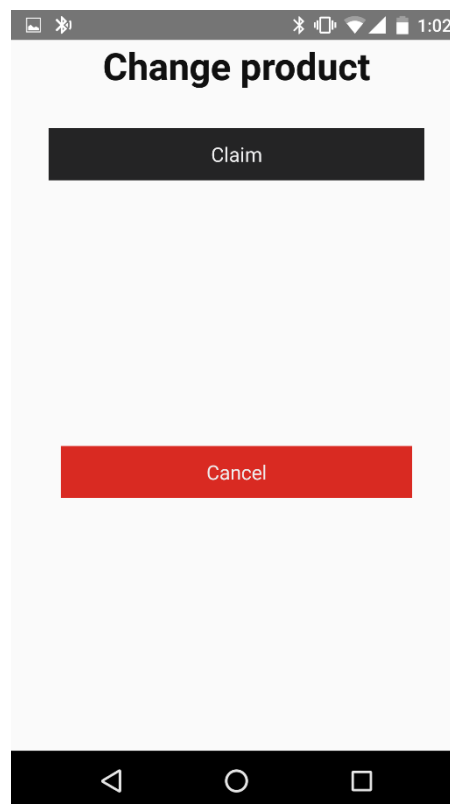
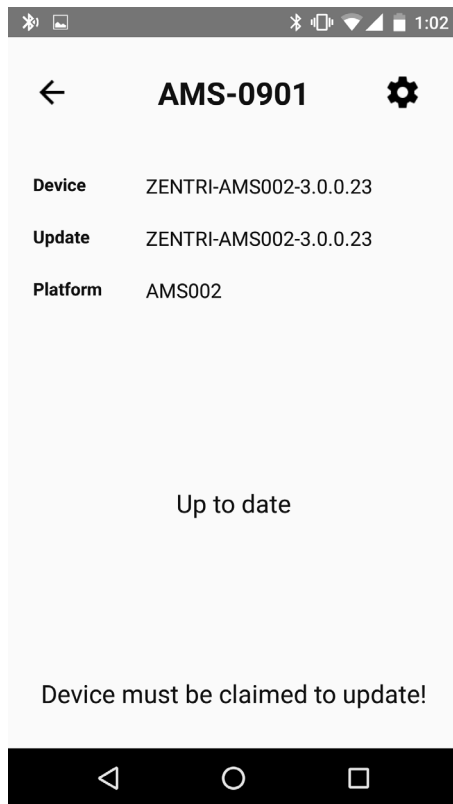
4.3 Claiming Your Device

When you claim a device, the DMS associates the device with your DMS user account.

Claiming the device allows you to update the device via the DMS and select new products for the device.

When you use the DMS with ZentriOS-S, the DMS stores an AES key on your device flash. Communication with the DMS is encrypted, and the firmware image is encrypted on the device with that AES key. This ensures secure updating and management of your device firmware.

If your device is running a ZentriOS-S product, and you have not yet claimed the device, the manager displays a message indicating the device must be claimed before it can be managed.



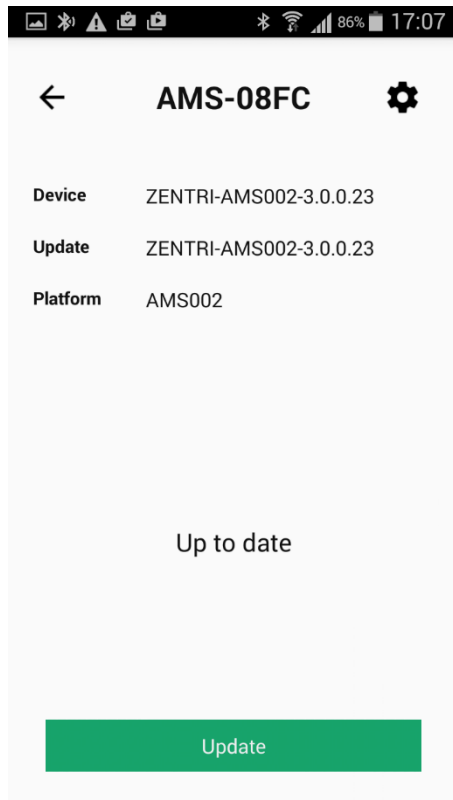
To claim, press the  **Settings** button.

Press the **Claim** button to claim your device.

When your device is claimed, the app displays the **Device Details** page. See below.

4.4 Device Details

The device details page shows the DMS status of the selected ZentriOS-S device:



Device: the device's current product and version

Update: the product to which the device is activated. This may be different to the device product, if you have selected a new product and have not yet updated.

Platform: the device platform

Update status:

Update to date: the device has the correct version of the product to which it is activated. There is no need to press the **Update** button

Update available: the device has the selected product but a new version is available. Press the **Update** button.

Update available - new product: the current device product is different to the update product. Press the **Update** button.

Device must be claimed to update!: you have not yet claimed this device. See Claiming Your Device, above.

To change the device settings, or to change Product, choose settings (press the 'Cog' button) to move to the **Change product** page.

Press **Update** to update to the product displayed in the **Update** box.

Changing Product

Choose settings (press the 'Cog' button) to move to the **Change product** page.

Press the product name drop down and select your desired product from the list.

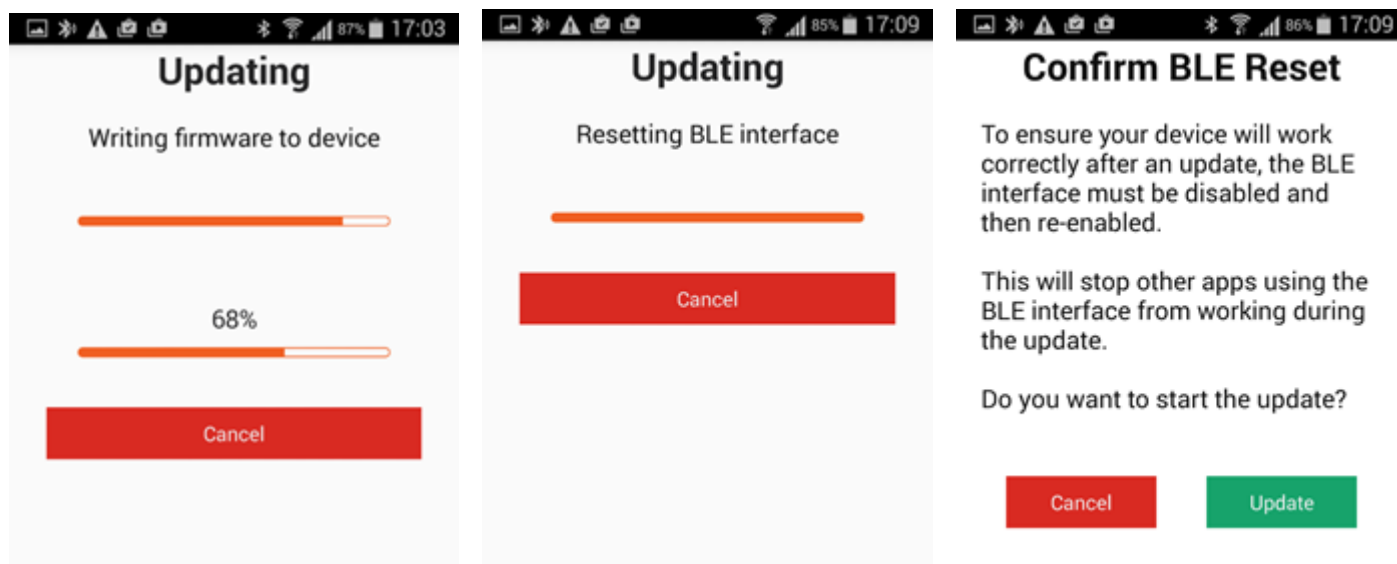


The products listed are those for which your DMS user has permission. If you do not see your required product here, [contact Silabs](#).

During the update, a BLE Reset is required. See Updating and BLE Reset.

4.5 Updating and BLE Reset

When changing or updating a product, your mobile device requires a BLE reset to allow it to correctly rediscover the state of the updated device.



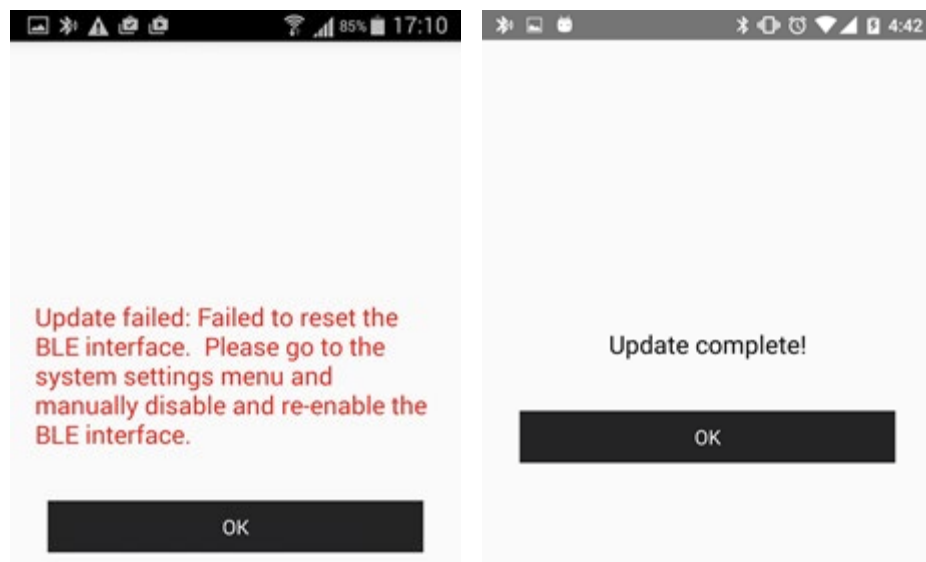
The app shows a BLE Reset confirmation page.

When you confirm the app updates your product.


Then the BLE Reset takes place.

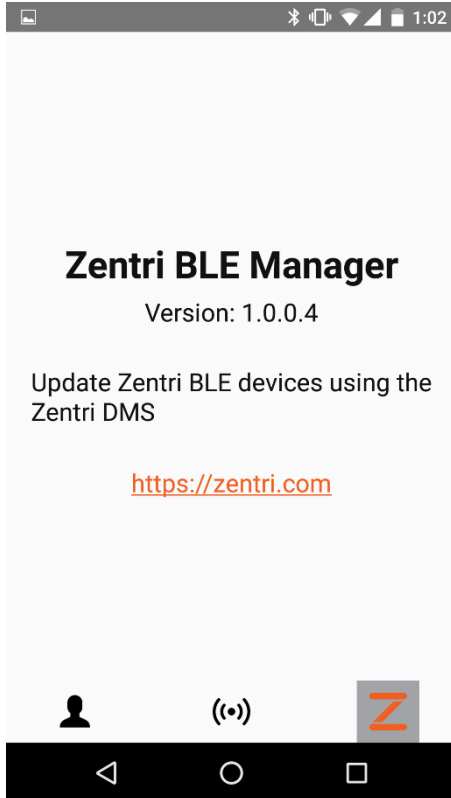
In some circumstances you may have to restart BLE outside the app, using your mobile device BLE Settings.

When the update is complete, the app displays the Update Complete message.




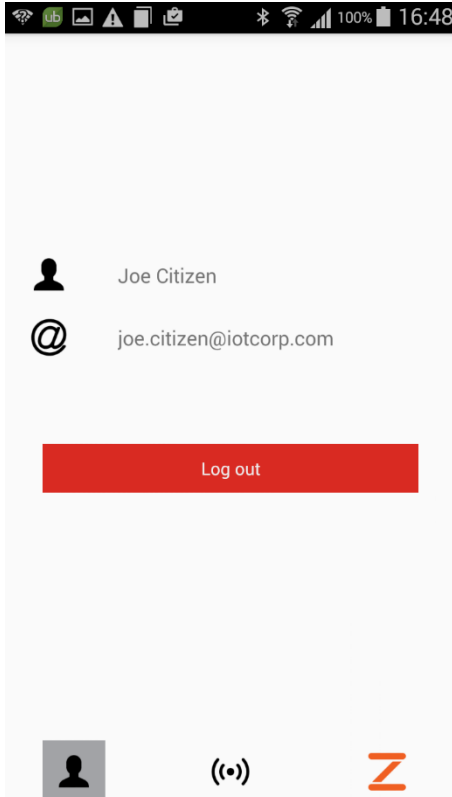
4.6 About the Zentri BLE Manager

Click the  About button on the Scan page to view the About page. It shows the Zentri BLE Manager version and provides a link to the zentri.com site.



4.7 View Profile and Log Out

Click the  Profile button on the Scan Results page to view the DMS Profile page. It shows your DMS user name and email address, and displays the `Log Out` button.



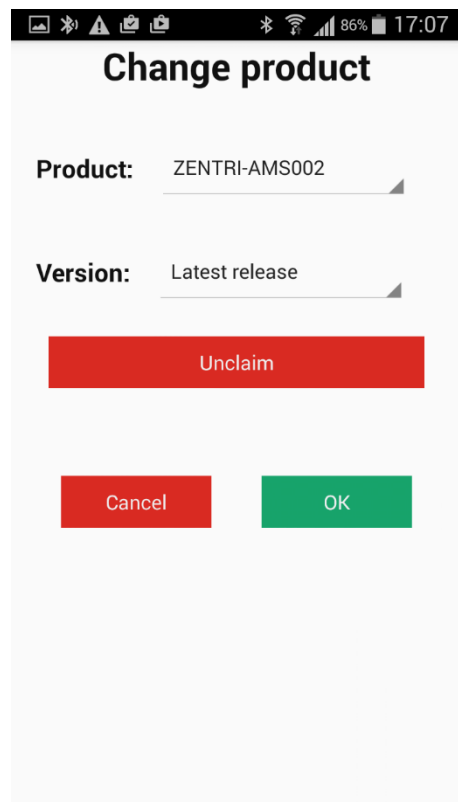
4.8 Unclaiming a Device

You may wish to unclaim your device to remove the association in the DMS between the device and your user.

Choose settings (press the 'Cog' button) to move to the `Change product` page.

Press the `Unclaim` button.

The DMS removes the link between your DMS user and the DMS device record.



5 Ordering Information

Table 4 provides ordering information for AMS001 evaluation boards.

Table 4. Ordering Information

Part Number	Picture	Description
AMS001-E01 'Wahoo'		ZentriOS-S development and evaluation platform for the surface-mount AMS001 module. The surface mount AMS001 module is not removable.

6 Revision History & Glossary

6.1 Revision History

Table 5: Document Revision History

Revision	Date	Change Description
ARG-AMS001E-100R	Nov 10, 2014	First release
ARG-AMS001E-101R	Mar 11, 2015	Added accelerometer make and model
ARG-AMS001E-102R	May 21, 2015	Removed reference to Putty
ARG-AMS00x-E01-103R	Oct 1, 2015	Changed document number to ARG-AMS00x-E03 Bream Evaluation Guide
ARG-AMS00x-E01-104R	Oct 16, 2017	Changed to Zentri/Silabs branding, removed Wahoo app description and added BLE Manager app description.

6.2 Glossary

In most cases, acronyms and abbreviations are defined on first use. A comprehensive list of acronyms and other terms used in Zentri documents are provided on the Zentri website at <https://docs.zentri.com/zentri/glossary>

APPENDIX A – Configuring a Terminal Application

The following instructions describe how to obtain and install a serial terminal application for use on computers running a Windows® or OS X operations system. ACKme recommends using Tera Term for Windows® systems and CoolTerm for OS X systems, however other equivalent applications may work equally well.

Plug the evaluation board into the computer using a USB cable before continuing.

Verify USB-Serial Driver Installation

The USB-Serial interface on ZentriOS-S evaluation boards is based on an FTDI chip used widely in the industry. Most operating systems including Windows®, OS X, and Linux provide integrated FTDI driver support as part of the operating system. However on some older machines, or machines that do not pickup regular updates, the driver may not automatically install and it is necessary to manually install the driver.

On computers running Windows®, check if the driver is installed as follows:

- Display the System Control Panel (e.g. press the 'Windows' key + Pause key).
- In the left-hand column near the top of the panel, click **Device Manager**
- In the Device Manager dialog, expand the Ports (COM and LPT) branch
- FTDI drivers appear under the USB Serial Port items. If no items of this kind appear, the drivers may not be installed.
Note: The driver entry may not appear if the ACKme device is not connected to the USB port and powered on.
- Double click the USB Serial Port entry.
- Select the **General** tab in the USB Serial Port Properties dialog. Check the following:
 - Manufacturer: FTDI
 - Device status: This device is working properly
- Select the **Driver** tab in the USB Serial Port Properties dialog. Check the following:
 - Driver Provider: FTDI
 - Update drivers if necessary by clicking the **Update Driver...** button.
- In some cases, the FTDI driver may actually be correctly installed, but the driver may not enumerate as a Virtual Communications Port (VCP). If this is the case, find the device under the USB Serial Bus controllers section of the Device manager, open the device, check the VCP box, then click OK. It may be necessary to unplug/replug your evaluation board in order for the VCP driver to load correctly.

If the FTDI drivers do not appear to be installed, see the installation instructions on the FTDI official site:

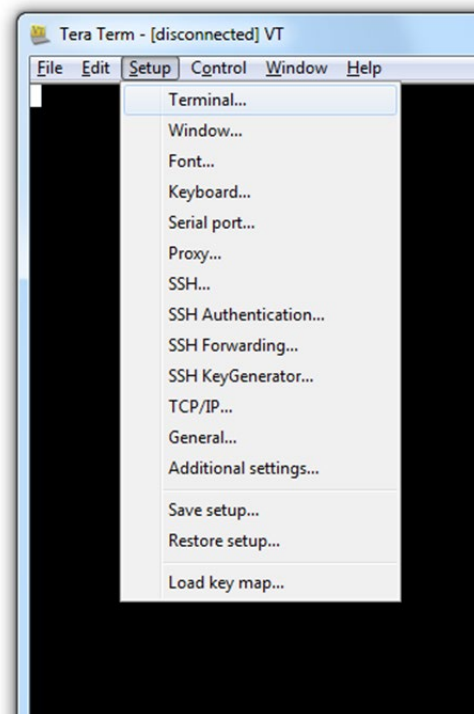
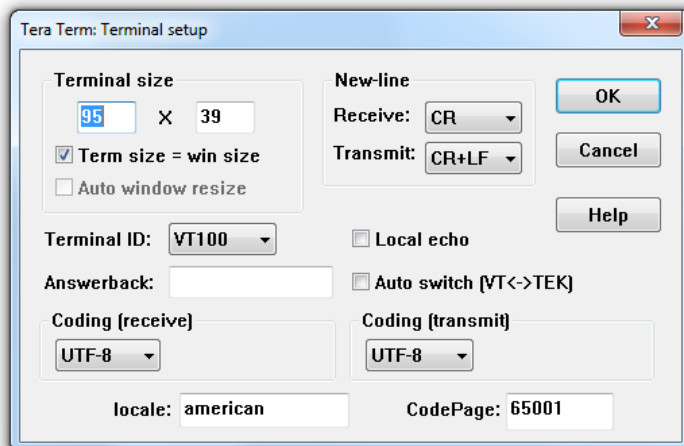
<http://www.ftdichip.com/Support/Documents/InstallGuides.htm>

Set Up Tera Term for Windows®

Tera Term is available as a free download from <http://ttssh2.sourceforge.jp>. Download and install Tera Term now if you have not already done so. The following procedure describes how to establish a UART serial connection between Tera Term and the evaluation board.

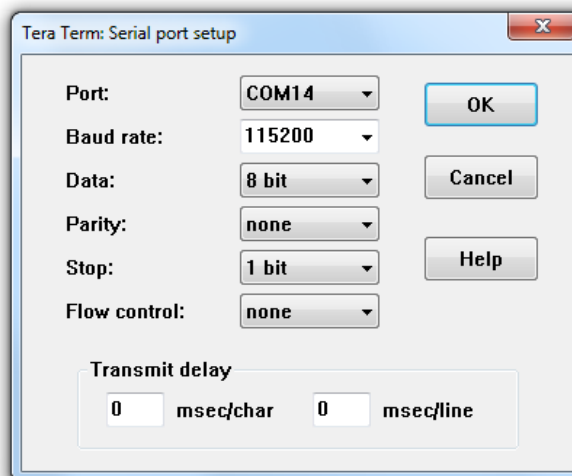
1. Start the Tera Term application and click on the **Setup** tab. A dropdown appears providing options to configure Tera Term as shown in the screen capture on the right. Select **Terminal**.
2. Terminal Setup. In the **New-line** section of the **Setup Terminal** dialog box (see the screen capture below), ensure that:
 - **Receive:** is set to **CR**
 - **Transmit:** is set to **CR+LF**

Close the **Terminal Setup** dialog box by selecting **OK**.



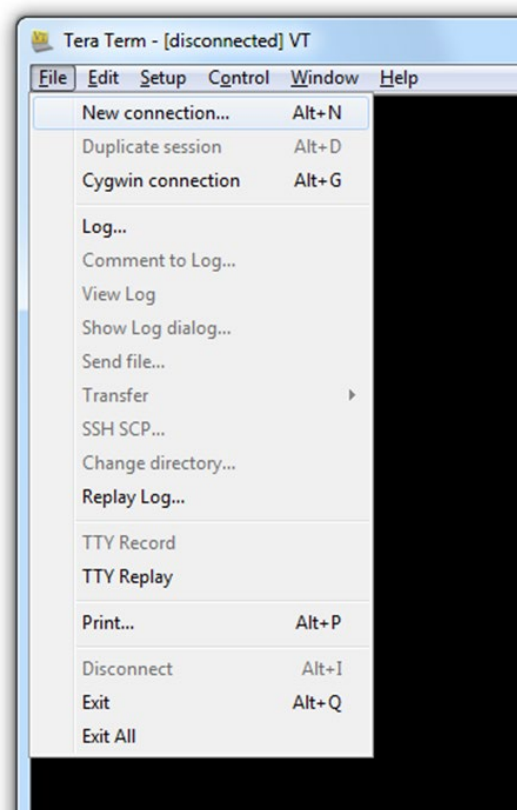
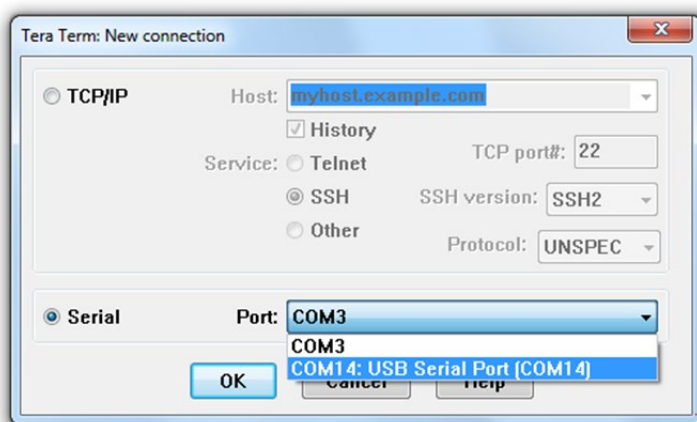
3. Serial Port Setup. Select the **Setup** tab again from the main window, then select **Serial port**. A **Setup serial port** dialog box appears. Ensure the settings in the dialog box match the settings shown in the following screen capture. The **COM Port** shown in the example (COM14) will almost certainly be different for your evaluation board, be sure to choose the COM port that matches your board.

When the serial port has been correctly setup, close the **Serial port** setup dialog box by selecting **OK**.

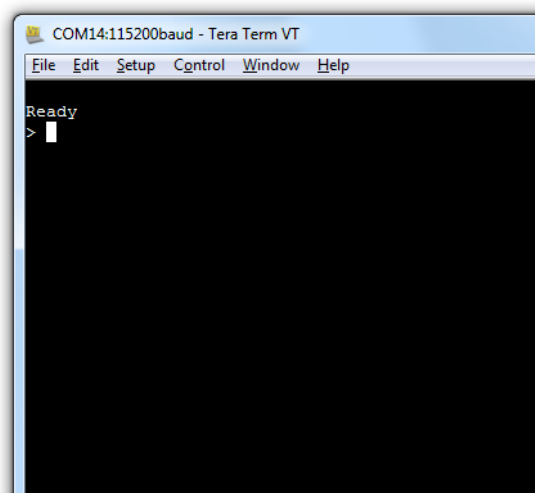


4. New Connection. From the Tera Term application menu, setup a new connection with the evaluation board by selecting **File | New connection** (or by pressing **Alt + N**) as shown in the screen capture on the right. A New connection dialog box appears as shown in the following screen capture. Check the **Serial** radio button, then click the **Port:** dropdown menu and select the COM port that matches your evaluation board. The COM port description for the evaluation board includes the text **COMxx: USB Serial Port (COMxx)**.

Once the correct COM port has been selected, close the **New connection** dialog box by selecting **OK**.



5. Testing the connection. If Tera Term was able to connect successfully, the text in the application title bar indicates which COM port is connected, and the baud rate of the connection. For the example documented above, Tera Term displays 'COM14:115200baud'. The Tera Term screen remains blank however until a character is sent to ZentriOS-S. Try pressing the **Enter** key, ZentriOS-S responds with `Ready` as shown in the following screen capture.

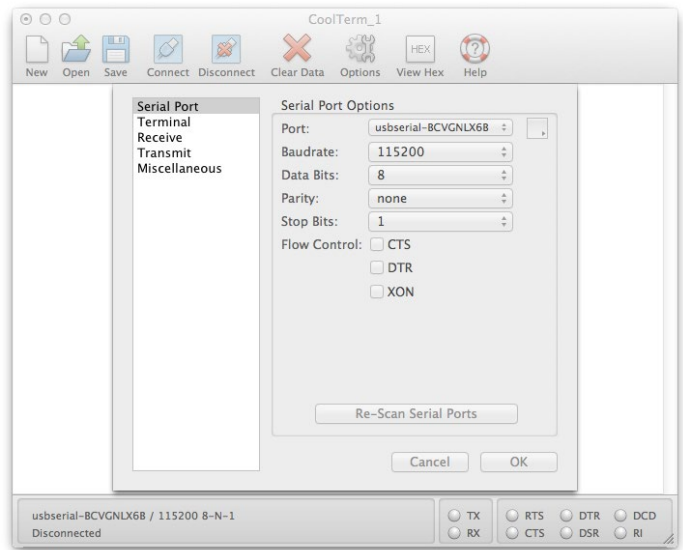


Set Up CoolTerm for OS X

CoolTerm is available as a free download from <http://freeware.the-meiers.org/CoolTermMac.zip>. Download and install CoolTerm now if you have not already done so.

The following procedure describes how to establish a UART serial interface between CoolTerm and the evaluation board.

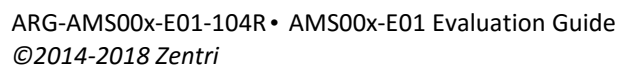
1. Start the CoolTerm application and click the **Options** menu icon. The CoolTerm Configuration window opens. Set the Serial Port configuration options as follows:
 - Port: **usbserial-XXXXXXX**
 - Baudrate: **115200**
 - Data bits: **8**
 - Parity: **none**
 - Stop bits: **1**
 - Flow control : Deselect all options
2. Click **OK**.
3. Click the **Connect** menu icon. The CoolTerm application connects to the evaluation board.



Try pressing the **Enter** key, if CoolTerm is successfully connected to the evaluation board, ZentriOS-S responds with

```
Ready  
>
```

The schematic on this page is for Wahoo version 2 - AMS001-E01.2. Schematics for other board revisions are available at <https://docs.zentri.com/zentri/resources/ams001>



Disclaimer

Silicon Labs intends to provide customers with the latest, accurate, and in-depth documentation of all peripherals and modules available for system and software implementers using or intending to use the Silicon Labs products. Characterization data, available modules and peripherals, memory sizes and memory addresses refer to each specific device, and "Typical" parameters provided can and do vary in different applications. Application examples described herein are for illustrative purposes only. Silicon Labs reserves the right to make changes without further notice and limitation to product information, specifications, and descriptions herein, and does not give warranties as to the accuracy or completeness of the included information. Silicon Labs shall have no liability for the consequences of use of the information supplied herein. This document does not imply or express copyright licenses granted hereunder to design or fabricate any integrated circuits. The products are not designed or authorized to be used within any Life Support System without the specific written consent of Silicon Labs. A "Life Support System" is any product or system intended to support or sustain life and/or health, which, if it fails, can be reasonably expected to result in significant personal injury or death. Silicon Labs products are not designed or authorized for military applications. Silicon Labs products shall under no circumstances be used in weapons of mass destruction including (but not limited to) nuclear, biological or chemical weapons, or missiles capable of delivering such weapons.

Trademark Information

Silicon Laboratories Inc.®, Silicon Laboratories®, Silicon Labs®, SiLabs® and the Silicon Labs logo®, Bluegiga®, Bluegiga Logo®, Clockbuilder®, CMEMS®, DSPLL®, EFM®, EFM32®, EFR, Ember®, Energy Micro, Energy Micro logo and combinations thereof, "the world's most energy friendly microcontrollers", Ember®, EZLink®, EZRadio®, EZRadioPRO®, Gecko®, ISModem®, Micrium, Precision32®, ProSLIC®, Simplicity Studio®, SiPHY®, Telegesis, the Telegesis Logo®, USBXpress®, Zentri and others are trademarks or registered trademarks of Silicon Labs. ARM, CORTEX, Cortex-M3 and THUMB are trademarks or registered trademarks of ARM Holdings. Keil is a registered trademark of ARM Limited. All other products or brand names mentioned herein are trademarks of their respective holders.

Silicon Labs

US Headquarters:
400 West Cesar Chavez St
Austin, TX 78701, USA

© 2016-2018 Zentri Inc. All rights reserved.

ARG-AMS00x-E01-104R • Reference Guide
October 3, 2018

Contact Information

+1 (512) 416 8500

<https://www.silabs.com/about-us/contact-us>



A Silicon Labs Company